



# Immingham Green Energy Terminal

TR030008

Volume 6

6.7 Outline Construction Traffic Management Plan

Planning Act 2008

Regulation 5(2)(a)

Infrastructure Planning (Applications: Prescribed  
Forms and Procedure) Regulations 2009 (as  
amended)

September 2023

## Infrastructure Planning

### Planning Act 2008

The Infrastructure Planning  
(Applications: Prescribed Forms and  
Procedure) Regulations 2009 (as amended)

# Immingham Green Energy Terminal Development Consent Order 2023

## 6.7 Outline Construction Traffic Management Plan

<b>Regulation Reference</b>	APFP Regulation 5(2)(a)
<b>Planning Inspectorate Case Reference</b>	TR030008
<b>Application Document Reference</b>	TR030008/APP/6.7
<b>Author</b>	Associated British Ports Air Products BR

<b>Version</b>	<b>Date</b>	<b>Status of Version</b>
Revision 1	21 September 2023	DCO Application
<u>Revision 2</u>	<u>4 March 2024</u>	<u>Deadline 1</u>

Planning Inspectorate Scheme Ref: TR030008  
Application Document Ref: TR030008/APP/6.7

Formatted

Formatted: Tab stops: 16.98 cm, Right + Not at 15.92 cm

Formatted: Font: 9 pt



## Table of contents

Formatted

Chapter	Pages
<b>Executive Summary .....</b>	<b>1</b>
<b>1. Introduction .....</b>	<b>2</b>
1.2 The Applicant .....	2
1.3 Air Products BR Ltd .....	2
1.4 The Project .....	2
1.5 The Project Site .....	4
1.6 Highway Network Context .....	4
1.7 The Purpose and Structure of this Document .....	6
<b>2. Construction Phase .....</b>	<b>7</b>
2.1 Indicative Construction Programme .....	7
2.2 Construction Phase Site Worker Traffic Generation .....	9
2.3 Construction Phase HGV Traffic Generation .....	9
2.4 Precondition Survey .....	14
2.5 Designated Routing to the Site .....	14
2.6 Working Hours .....	15
2.7 Dealing with Non-Compliance .....	16
2.8 Wheel Cleaning Facility .....	16
2.9 Advance Warning Signage .....	16
2.10 Contact Details .....	17
2.11 Network Rail .....	17
<b>3. Construction Access .....</b>	<b>18</b>
3.1 Access Points .....	18
<b>4. Abnormal Indivisible Loads .....</b>	<b>26</b>
4.1 Strategy and Routing .....	26
<b>5. Monitoring .....</b>	<b>27</b>
5.1 General Measures .....	27
5.2 HGV Monitoring Surveys .....	27
<b>6. Consultation .....</b>	<b>28</b>
6.1 Planned Liaison .....	28
<b>7. References .....</b>	<b>29</b>
<b>8. Abbreviations and Glossary of Terms .....</b>	<b>30</b>
<b>Appendix A: Construction Worker Travel Plan .....</b>	<b>31</b>
<b>Executive Summary .....</b>	<b>1</b>
<b>1. Introduction .....</b>	<b>2</b>
1.2 The Applicant .....	2
1.3 Air Products BR Ltd .....	2
1.4 The Project .....	2
1.5 The Project Site .....	4
1.6 Highway Network Context .....	4
1.7 The Purpose and Structure of this Document .....	6



<b>2.</b>	<b>Construction Phase</b>	<b>7</b>
2.1	Indicative Construction Programme	7
2.2	Construction Phase Site Worker Traffic Generation	9
2.3	Construction Phase HGV Traffic Generation	9
2.4	Precondition Survey	14
2.5	Designated Routing to the Site	14
2.6	Working Hours	15
2.7	Dealing with Non-Compliance	16
2.8	Wheel Cleaning Facility	16
2.9	Advance Warning Signage	16
2.10	Contact Details	17
2.11	Network Rail	17
<b>3.</b>	<b>Construction Access</b>	<b>19</b>
3.1	Access Points	19
<b>4.</b>	<b>Abnormal Indivisible Loads</b>	<b>27</b>
4.1	Strategy and Routing	27
<b>5.</b>	<b>Monitoring</b>	<b>28</b>
5.1	General Measures	28
5.2	HGV Monitoring Surveys	28
<b>6.</b>	<b>Consultation</b>	<b>29</b>
6.1	Planned Liaison	29
6.2	Royal Mail	30
<b>7.</b>	<b>References</b>	<b>31</b>
<b>8.</b>	<b>Abbreviations and Glossary of Terms</b>	<b>32</b>
<b>Appendix A: Construction Worker Travel Plan</b>		<b>33</b>

**Tables**

Table 1:	Indicative Construction Phasing Timeline for the Project	7
Table 2:	Anticipated Buildings and Infrastructure Within the Site in Phase 1	8
Table 3:	Landside HGV Trip Generation (One Way)	9
Table 4:	Jetty HGV Trip Generation	11
Table 5:	Construction Site Traffic Split Between the West and East Sites	12
Table 6:	Construction HGV Traffic by Site (Two-Way)	12
Table 7:	HGV Distribution	12
Table 8:	Daily Number of HGV Trips (One Way)	13
Table 9:	HGV Traffic Daily Profile	13
Table 10:	Glossary and Abbreviations	32

**Plates**

Plate 1:	Site Plan	5
Plate 2:	Designated HGV Routing Plan	15
Plate 3:	Example of Proposed Signage	17
Plate 4:	Construction Accesses	18
Plate 5:	Temporary Access AA	19



Plate 6: Temporary Access AB .....	20
Plate 7: Temporary Access AC .....	21
Plate 8: Temporary Access M .....	22
Plate 9: Temporary Accesses O and N .....	22
Plate 10: Temporary Access P .....	24
Plate 11: Temporary Access U .....	25
Plate 1: Site Plan .....	5
Plate 2: Designated HGV Routing Plan .....	15
Plate 3: Example of Proposed Signage .....	17
Plate 4: Construction Accesses .....	19
Plate 5: Temporary Access AA .....	20
Plate 6: Temporary Access AB .....	21
Plate 7: Temporary Access AC .....	22
Plate 8: Temporary Access M .....	23
Plate 9: Temporary Accesses O and N .....	24
Plate 10: Temporary Access P .....	25
Plate 11: Temporary Access U .....	26



## Executive Summary

This Outline Construction Traffic Management Plan (“OCTMP”) has been prepared to outline the controls intended to be used for the management and routing of Heavy Goods Vehicle (“HGV”) traffic associated with the construction, operation and maintenance of a multi-user green energy terminal by Associated British Ports (“the Applicant”) which would be located on the eastern side of the Port of Immingham (“the Port”), as well as associated development (collectively termed “the Project”). A part of the associated development is the construction and operation of a green hydrogen production facility for the production of green hydrogen onsite by Air Products BR Ltd (“Air Products”).

The construction of the Project would generate a volume of HGV movements involved in site preparation and delivery plant and machinery, concrete and aggregates, steelwork, bricks and block work and other general construction materials. A small number of abnormal indivisible loads (“AIL”) will also be generated by the construction of the Project which will need appropriate management.

This Outline CTMP sets out how the appointed contractor will manage traffic impacts associated with the Project. The appointed contractor will be required to use this as a starting point for the detailed CTMP to be prepared in accordance with a requirement of the draft Development Consent Order (“DCO”) [TR030008/APP/2.1] to demonstrate how the traffic generation as set out in the accompanying Environmental Statement (“ES”) Chapter (Chapter 11: Traffic and Transport [TR030008/APP/6.2]) will be achieved. This OCTMP also describes the issues that have been identified during the application process and the measures necessary to address these issues.

This Outline CTMP is structured as follows:

- a. **Section 1** describes the Project including the construction programme, the profile of car and light van generation and HGV generation.
- b. **Section 2** describes the proposed measures to control HGV routing and impact.
- c. **Section 3** describes the construction accesses.
- d. **Section 4** describes the proposed AIL route and routing strategy.
- e. **Section 5** provides the monitoring strategy.
- f. **Section 6** describes the planned liaison with key stakeholders.

## 1. Introduction

- 1.1.1 This OCTMP forms part of the application (the “Application”) for a DCO that has been submitted to the Secretary of State for Transport (“the SoS”), under Section 37 of the Planning Act 2008 (“the 2008 Act”) (Ref 1-1).
- 1.1.2 The Applicant is seeking a DCO for the construction, operation and maintenance of a multi-user green energy Terminal which would be located on the eastern side of the Port, as well as associated development (collectively termed the Project). A part of the associated development is the construction and operation of a green hydrogen production facility for the production of green hydrogen onsite by Air Products.
- 1.1.3 The Project falls under the definition of a Nationally Significant Infrastructure Project (“NSIP”) under s14(1)(j) and s24(3)(c) of the 2008 Act. The new jetty and topside infrastructure (including the associated pipework on the jetty) would comprise the NSIP. The pipeline and development of the site areas for the transfer and storage of the ammonia and the hydrogen production, storage and distribution would comprise ‘associated development’ for the purpose of s115 of the 2008 Act.
- ### 1.2 The Applicant
- 1.2.1 Associated British Ports (“ABP”) was established in 1981 following the privatisation of the British Transport Docks Board. ABP is the largest ports group in the United Kingdom (“UK”), owning and operating 21 ports and other transport-related businesses across England, Wales and Scotland. On the Humber, ABP owns and operates four ports, namely the Port and the ports of Hull, Grimsby and Goole, which together constitute the largest ports complex in the UK. The Port is the largest and busiest of ABP’s four Humber ports.
- ### 1.3 Air Products BR Ltd
- 1.3.1 Air Products is a world-leading industrial gases company that has been in operation for nearly 80 years, and more than 60 years in the UK and Ireland. Air Products has over 1,000 UK and Ireland employees working across 35 production facilities, in addition to a number of hydrogen refuelling stations and hydrogen, nitrogen and oxygen plants. The company develops, engineers, builds, owns and operates some of the world’s largest industrial gas projects.
- ### 1.4 The Project
- 1.4.1 The Project would comprise the alteration of a harbour facility for the construction, operation and maintenance of a multi-user green energy terminal to facilitate the import and export of liquid bulks associated with the energy sector, together with associated development. The terminal consists of a jetty and associated loading/unloading infrastructure and pipelines. The Project is described in **Chapter 2: The Project [TR030008/APP/6.2]**.

- 1.4.2 Initially, the terminal would be used for the import and export of green ammonia to be converted to green hydrogen. To facilitate this, a hydrogen production facility, comprising associated ammonia handling equipment, storage and processing units, would be constructed as part of the Project. Other proposed users of the green energy terminal will come forward in due course and separate applications submitted as required. It is anticipated that future users of the terminal are likely to include customers in the carbon capture sector.
- 1.4.3 The Project includes the following elements (references to 'Work No.' are to the corresponding Work Numbers in Schedule 1 of the draft DCO [TR030008/APP/2.1] whilst the location of each Work No. within the Site is shown on the Works Plans [TR030008/APP/4.2]):
- a. On the marine side (the NSIP) (**Work No. 1**):
    - i A jetty (defined by **Work No. 1a**) including a loading platform, associated dolphins, fenders and walkways, topside infrastructure but not limited to control rooms, marine loading arms, pipe-racks, pipelines and other infrastructure.
    - ii A single berth, with a berthing pocket with a depth of up to 14.5m below chart datum.
  - b. On the land side (the associated development):
    - i A corridor between the new jetty and Laporte Road which would support a private road (the 'jetty access road'), pipe-racks, pipelines to enable the ammonia import to the East Site, as well as security gates, a security building, a power distribution building and associated utilities – (**Work No. 2**).
    - ii 'East Site - Ammonia Storage' (**Work No. 3**) on which an ammonia storage tank and related plant including an ammonia tank flare would be constructed (**Work No. 3a**) as well as additional buildings (including welfare building, power distribution building and a process instrumentation building), pipe-racks, pipelines, pipes, cable-racks, utilities and other infrastructure.
    - iii Construction of a culvert (**Work No. 4**) under Laporte Road for pipelines, pipes and cables and other conducting media linking the two parts of the East Site.
    - iv 'East Site – Hydrogen Production Facility' (**Work No. 5**) on which up to three hydrogen production units and associated plant including flue gas stacks and flare stacks would be constructed (**Work No. 5a**) together with additional buildings (including process control building, power distribution buildings, process instrumentation buildings, analyser shelters), pipe-racks, pipelines, pipes, utilities and other infrastructure.
    - v Underground pipelines, pipes, cables and other conducting media (**Work No. 6**), between the East and West Sites, for the transfer of ammonia, hydrogen, nitrogen and utilities, with cathodic protection against saline corrosion.



- vi 'West Site' (**Work No. 7**) involving the construction of up to three hydrogen production units with associated flue gas stacks and flare stacks and up to four liquefier units (**Work No. 7a** and **Work No. 7b** combined); hydrogen storage tanks, hydrogen trailer filling stations, a hydrogen vent stack and associated process equipment (**Work No. 7c**); and hydrogen vehicle and trailer filling stations, hydrogen compressors and associated process equipment (**Work No. 7d**). Also additional buildings (including but not limited to control room and workshop building, security and visitor building, contractor building, warehouse, driver administration building, safe haven building, electrical substation and metering station, power distribution buildings, process instrumentation buildings, analyser buildings and additional temporary buildings during construction), process and utility plant including cooling towers and pumps, fire water tank, pipe-racks, pipelines, pipes, cable-racks, utilities and other infrastructure.
- vii Formation of temporary construction and laydown areas on Queens Road (**Work No. 8**) and off Laporte Road (**Work No. 9**).
- viii Temporary removal of street furniture and modification of overhead cables on Kings Road (**Work No. 10**) associated with the transport of large construction components from the Port to the Site.

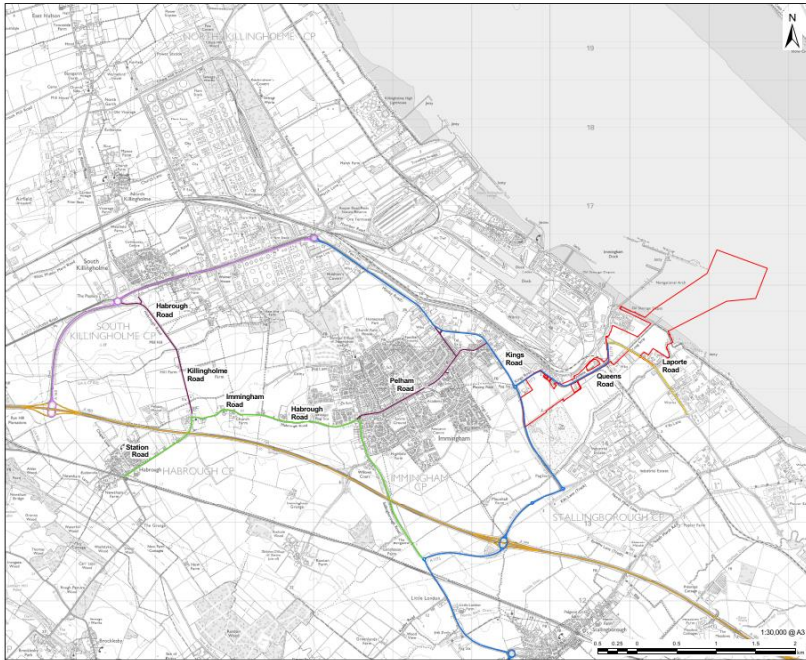
## 1.5 The Project Site

- 1.5.1 The Site is located in North East Lincolnshire on the south bank of the Humber Estuary to the east of the Port and is centred on National Grid Reference E: 520783 N: 415271.
- 1.5.2 The land-side works fall within the administrative boundary of North East Lincolnshire Council ("NELC"), The marine-side works, which extend seaward and fall beyond the local authority's boundary, would take place in the bed of the Humber Estuary, which is owned by the Crown Estate and over which the Applicant has the benefit of a long lease. The Project in its entirety covers an area of approximately 121.13ha.

## 1.6 Highway Network Context

- 1.6.1 The Site is situated to the south of the Port and is accessed from Queens Road and Laporte Road with the A1173 providing a link to the wider road network, which in this case is represented by the A180, which is managed by National Highways. The boundary of the Site is shown below in **Plate 1**.

**Plate 1: Site Plan**



- 1.6.2 The existing highway network serves an area that is largely industrial in nature, with very few residential properties other than in the north as the A1173 travels through the northern edge of Immingham. The only major residential area is the town of Immingham located to the south of the Port.
- 1.6.3 Queens Road is a single carriageway road providing a link from the Port areas towards the A1173, where it becomes Kings Road. Queens Road has a footway along the northern side and is street lit with right turn ghost islands into major side roads. Whilst the road is considered to be industrial in character, there are a small number of residential dwellings and light industrial activities located along Queens Road adjacent to and opposite the northern boundary of the West Site.
- 1.6.4 Laporte Road is a single carriageway road located to the east of Queens Road, with which it forms a priority T-junction and continues south towards the Kiln Lane/Hobson Way/Laporte Road roundabout. The road has an existing 40mph limit on the approaches to both Queens Road and the Kiln Lane roundabout, with these being linked by a section of 60mph within the centre of the road link. There are no footways in place along Laporte Road

- 1.6.5 Kings Road is a single carriageway road and connects with Queens Road to then form a three-arm roundabout junction with the A1173, where Kings Road then continues to the north to form a link into Immingham. The A1173 Manby Road then continues through the edge of Immingham to provide a link to the A160 in the north. It has street lighting and a footway heading northbound along one side of the road, and in the vicinity of the Site is industrial in character, although this does change to residential to the north as it enters Immingham.
- 1.6.6 The A1173, which is formed in part by Kings Road in the north, continues south as a single carriageway to form a three arm roundabout with Kiln Lane before continuing south to form a grade separated junction with the A180. It is rural/industrial in nature, with the Grimsby to Immingham Cycle Superhighway running between Kings Road and Kiln Lane providing a link southwards into Grimsby.
- 1.6.7 Approximately mid-way between the Kiln Lane roundabout and the junction with the A180 there is a roundabout on the A1173 which provides access into adjacent land, and there is a footway along the section leading to Kiln Lane, but no footway on the section leading to the A180.
- 1.6.8 Kiln Lane is a single carriageway and connects to the A1173 at a four-arm roundabout (A1173 heading both north and west). At this roundabout it also connects to several roads serving industrial estates (Stallingborough Industrial Estate, Industrial Estate South).
- 1.6.9 The A160 heads west from the A1173 and connects to the A180. Both of these links are part of the strategic road network and are maintained by National Highways. The A180 heads east to Grimsby and west towards the closest motorway (M180) and provides the link from the local area to the wider highway network within the region.
- 1.7 The Purpose and Structure of this Document
- 1.7.1 This OCTMP draws upon the assessment of impacts on transport receptors presented in **Chapter 11: Traffic and Transport [TR030008/APP/6.2]** and will be provided to the appointed contractor who will be required to prepare a Construction Traffic Management Plan and accompanying Construction Workers Travel Plan (Appendix A of this CTMP), which is secured within the **draft DCO [TR030008/APP/2.1]** and will be based on this OCTMP. This OCTMP also identifies measures to control the routing and impact of HGVs on the local road network during construction. The identified measures will form contractual obligations through normal contractual means. An Outline Construction Workers Travel Plan ("CWTP") is included as Appendix A to this management plan, this presents construction worker traffic generation from the construction of the Project and the measures to be implemented to encourage sustainable travel modes.

## 2. Construction Phase

### 2.1 Indicative Construction Programme

- 2.1.1 Subject to the DCO being granted, there would be a phased approach to the construction of the Project, with the construction of the terminal and first phase of the green hydrogen production comprising the first phase of development, which, subject to securing the relevant consents, is likely to start in early 2025 and last for between two and a half to three years, with a peak in construction activity predicted in at the end of 2026 (Month 23).
- 2.1.2 Following completion of the first phase of the construction, a further five phases of the hydrogen production facility will be constructed incrementally to increase the processing capacity as the market for green hydrogen increases. There will therefore be six phases of development in total, with each phase adding a hydrogen production unit.
- 2.1.3 For the purposes of this OCTMP, the development scenario for the Project is based on a six-phase construction timeline, with completion of all phases over an indicative 11-year period. This programme duration is likely to be a worst case as market demand could accelerate the programme, although Phase 1 would always represent the peak of construction, irrespective of the subsequent programme.
- 2.1.4 This phasing is illustrated in **Table 1** and assumes that each phase of the associated development will become operational following its construction.

**Table 1: Indicative Construction Phasing Timeline for the Project**

Phase	Year 1	Year 2	Year 3	Year 4	Year 5	Year 6	Year 7	Year 8	Year 9	Year 10	Year 11
Phase 1											
Phase 2											
Phase 3											
Phase 4											
Phase 5											
Phase 6											

- 2.1.5 The start of construction of Phase 2 (here shown in Year 4) will depend on a number of factors including market demands for hydrogen at that point in time, whilst the timing of subsequent phases would be subject to the same tests. It is assumed that construction of Phases 2 to 6 may take up to eight years.
- 2.1.6 This OCTMP therefore focuses on Phase 1 of the construction, with the aim that it would be a 'live' document that would be regularly updated and reviewed as the construction on the site continues.
- 2.1.7 Phase 1 of the construction will comprise the following elements as presented in **Table 2**.

**Table 2: Anticipated Buildings and Infrastructure Within the Site in Phase 1**

Phase	Terminal (Work No. 1)	Pipeline Corridors	East Site	West Site	Temporary Construction Areas (Work No. 8, 9 and temporary use of other sites, under Work No 11b)
Phase 1 Construction: Y 1 – Y3	<p>Jetty structure and</p> <p>Jetty topside infrastructure, including pipework for ammonia and other liquid bulks</p> <p>Jetty access ramp</p> <p>Flood defence access ramp and flood defence replacement</p>	<p>Piperack and NH3 pipeline from the jetty</p> <p>Jetty access road</p> <p>H2, NH3 and Natural Gas pipelines and utilities between East and West Site</p> <p>Culvert including pipework, utilities and cabling linking the two parts of the East Site</p>	<p>NH<sub>3</sub> tank</p> <p>Internal access roads, drainage and utilities</p> <p>Temporary construction area</p>	<p>Two hydrogen production units</p> <p>One liquefier</p> <p>Tanker loading bays</p> <p>Trailer filling station</p> <p>Control room and workshop building</p> <p>Other supporting building and facilities,</p> <p>Internal access roads, drainage and utilities</p>	<p>Queens Road Temporary Construction Area for Air Products and contractor offices (Work No 8)</p> <p>Laporte Road Temporary Construction Area for material laydown and storage (Work No. 9)</p> <p>East Site – Hydrogen Production Facility for contractor offices, car parking, laydown storage in addition to a possible concrete batching plant and pile welding</p>

Phase	Terminal (Work No. 1)	Pipeline Corridors	East Site	West Site	Temporary Construction Areas (Work No. 8, 9 and temporary use of other sites, under Work No 11b)
					facility (Work No. 11b) West Site – for contractor and subcontractor cabins, laydown and warehouse storage and car parking (Work No. 11b)

## 2.2 Construction Phase Site Worker Traffic Generation

2.2.1 For construction worker traffic generation and the measures to be implemented to encourage sustainable travel modes, please refer to Appendix A, Outline Construction Worker Travel Plan.

## 2.3 Construction Phase HGV Traffic Generation

### Landside Construction – HGVs

2.3.1 The number of peak landside construction HGVs has been set out in **Table 3**.

**Table 3: Landside HGV Trip Generation (One Way)**

Critical Items	Unit	Total	Volume/ Weight/ Vehicle/ Transport	Total Number of Transports	Average Number of Transports/ Month	Average Number of Transports/ Week	Average Number of Transports/ Day ONE-WAY
Miscellaneous	-	-	-	1,040	43	10	2
Concrete	m <sup>3</sup>	53,341	8	6,668	556	128	25
Rebar	Te	4,862	10	486	41	9	2
Struct. Steel	Te	3,909	10	391	33	8	2
Pipe Erection	m	31,798	200	159	13	3	1

Critical Items	Unit	Total	Volume/ Weight/ Vehicle/ Transport	Total Number of Transports	Average Number of Transports/ Month	Average Number of Transports/ Week	Average Number of Transports/ Day ONE-WAY
Pipe Supports – CS	kg	96,363	5,000	19	2	0	0
Pipe Supports – SS	kg	4,267	5,000	1	0	0	0
Cable Supply – Electrical	m	144,525	16,000	9	1	0	0
Cable Trays – Elec.	m	22,914	600	38	3	1	0
Cables – Instrument	m	177,108	16,000	11	1	0	0
Cable Trays – Inst.	m	102,659	600	171	14	3	1
Equipment	Each	452	362	362	30	7	1
Asphalt	m <sup>2</sup>	53,629	40	1,341	112	26	5
Piles	Each	4,180	10	418	35	8	2
Gravel	m <sup>3</sup>	6,636	40	166	14	3	1
Fill Material	m <sup>3</sup>	175,579	40	4,389	366	84	16
Cut Volume	m <sup>3</sup>	22,336	40	558	47	11	2
Vegetation Removal	m <sup>2</sup>	450,000	160	2,813	234	54	11
Waste	-	-	-	-	-	-	24
<b>Totals</b>	-	-	-	<b>19,040</b>	<b>1,545</b>	<b>355</b>	<b>95</b>

2.3.2 There is therefore an expected average of approximately 95 HGV movements per day associated with the construction of the landside facilities, which equates to 190 average movements per day two way (95 in and 95 out) associated with the landside construction.

#### Jetty Construction – HGVs

2.3.3 The average number of jetty construction HGVs has been set out in **Table 4**.

**Table 4: Jetty HGV Trip Generation**

Activity	Total No. of Deliveries over a 3-Year Programme ONE-WAY	Average Daily No. of Deliveries over a 3-Year Programme (765 Working Days) ONE-WAY
PCC Cross head (5.1m)	4	0
PCC Crosshead (14m)	31	0
PCC Crosshead (17m)	14	0
PCC Crosshead (26m)	3	0
Y7 PPC Beams	221	0.5
Concrete Support Beams (0.4m x 1m)	17	0
Concrete Support Beam (0.8m x 1m)	50	0
PCC Trough Beam	235	0.5
PCC Deck Parapet Beam	120	0
PCC Deck Slab	314	0.5
In situ Concrete	820	1
Steel Reinforcement	67	0
Steelwork (Bracing and Sleeves)	24	0
CEMI	64	0
GGBS	41	0
Limestone 20 Aggregate	340	0.5
Sand Marine Aggregate	259	0.5
Admixture	2	0
<b>TOTAL</b>	<b>2,626</b>	<b>3.5 (rounded up to 4)</b>

2.3.4 There is therefore a total of 2,626 HGVs required for the jetty construction within a programme period of three years. This equates to 765 working days, giving a total of approximately eight two way movements (four arrivals and four departures) per day on average.



- 2.3.5 Therefore, combining the landside and jetty construction activity (**Table 3** and **Table 4**) there is a total of 198 HGVs per day on average (99 in and 99 out).
- 2.3.6 The above construction activity will occur across both the western and eastern sites, with the western site located adjacent to the A1173/Kings Road and the eastern site located adjacent to Queens Road/Laporte Road, and therefore not all construction traffic will use the full length of Kings Road/Queens Road; the split can be seen in **Table 5**, with the majority only using Kings Road in the north.

**Table 5: Construction Site Traffic Split Between the West and East Sites**

Construction Site	Construction HGVs
West Site (A1173/Kings Road)	70%
East Site (Queens Road/Laporte Road)	30%

- 2.3.7 The above total construction HGV flows can then be divided between the West and East Sites based upon the percentage splits in **Table 5**, as shown in **Table 6**.

**Table 6: Construction HGV Traffic by Site (Two-Way)**

Construction Site	Two-Way Construction HGVs
West Site (A1173/Kings Road)	139
East Site (Queens Road/Laporte Road)	59
<b>Total</b>	<b>199</b>

#### HGVS Distribution

- 2.3.8 HGVs delivering construction materials will all access the Site from the wider highway network beyond the immediate Project boundary from the A180 and A1173 and have been distributed onto the A180 in line with the existing vehicle proportions as presented in **Table 7**.

**Table 7: HGV Distribution**

Route	Distribution
A180 (W)	55%
A180 (E)	45%
<b>TOTAL</b>	<b>100%</b>

2.3.9 Based on the expected daily movements to the Site during the peak month of construction, the distribution of traffic is presented in **Table 8**.

**Table 8: Daily Number of HGV Trips (One Way)**

Route	Assumed Daily Number of HGV Trips (One Way)
A180 (W)	54
A180 (E)	45
<b>TOTAL</b>	<b>99</b>

2.3.10 The daily profile of HGV movement at the peak of construction, Month 23, is shown in **Table 9**, and is based on experience from construction sites and shows that the arrival and departure of HGVs from the site is anticipated to be spread evenly over the day, and has been used previously within Environmental Assessments.

**Table 9: HGV Traffic Daily Profile**

Hour Beginning	Percentage of Daily inbound trips	Percentage of daily outbound trips	Arrivals	Departures	Two Way
600	0%	0%	0	0	0
700	4%	4%	4	4	8
800	10%	9%	10	9	19
900	10%	9%	10	9	19
1000	10%	9%	10	9	19
1100	10%	9%	10	9	19
1200	10%	9%	10	9	19
1300	10%	9%	10	9	19
1400	9%	9%	9	9	18
1500	9%	9%	9	9	18
1600	9%	10%	9	10	19
1700	9%	10%	9	10	19
1800	0%	4%	0	4	4

Hour Beginning	Percentage of Daily inbound trips	Percentage of daily outbound trips	Arrivals	Departures	Two Way
1900	0%	0%	0	0	0
2000	0%	0%	0	0	0
2100	0%	0%	0	0	0
-	100%	100%	99	99	198

## 2.4 Precondition Survey

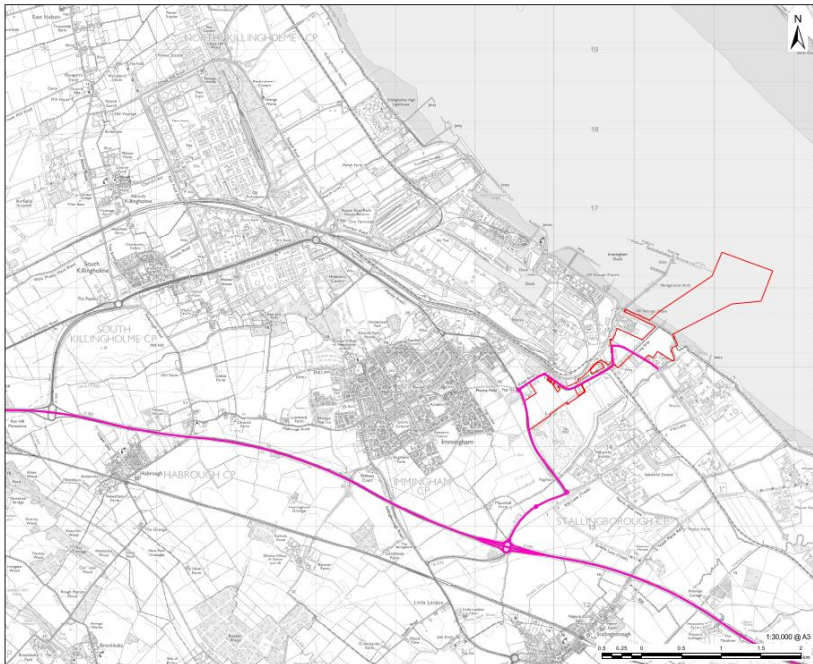
2.4.1 Prior to a start on site the contractor will undertake a survey of the existing highway network in liaison with the Local Highway Authority so that a baseline can be agreed prior to the works commencing.

2.4.2 The condition of the highway network against this agreed baseline will be reviewed as required both throughout the construction phase and the end of the works and any defects agreed to be as a result of the works will be rectified by the contractor.

## 2.5 Designated Routing to the Site

2.5.1 It is proposed that all construction HGVs associated with the construction phase will arrive and depart from the Site via Queens Road/Laporte Road to then access the wider highway network via the A1173 and A180. The designated HGV routing plan is shown indicatively in **Plate 2**.

**Plate 2: Designated HGV Routing Plan**



2.5.2 The HGV routing plan would be distributed to all drivers during their induction by the contractor. It would be a condition of contract between the Applicant and the appointed contractor to ensure that all HGV deliveries to the Site are instructed to use the designated route to access and egress the construction site. Sanctions would be put in place to deal with non-compliance, as set out below in **Section 2.7**.

**2.6 Working Hours**

**Marine Construction Working Hours**

2.6.1 In months where percussive piling is permitted within the water body, spatial diurnal and duration restrictions apply for certain periods as set out in the Deemed marine Licence. For example, it is anticipated that night time restrictions will apply to percussive piling works within the water body for Work No. 1, seaward of the mean highwater mark outside the hours of sunrise and sunset in certain summer months (June and August) and 19:00 and 07:00 in certain winter months (March, September and October), seven days a week. Other marine construction activities for Work No. 1 including dredging, are assumed to be undertaken on a 24-hour basis and continue until completion for safety or quality reasons. The marine construction working hours would be secured further through the Deemed Marine Licence.

2.6.2 In addition, some landside construction activities to support marine working may be required during the marine construction working hours. This landside working would be restricted to the work areas defined for **Work No. 1, 2 and 9**. The landside activities are expected to include material supply, plant maintenance and vehicle movements to support the construction of **Work No. 1**.

#### **Landside Construction Working Hours**

2.6.3 Core landside construction working hours would be between 07:00 and 19:00 Monday to Saturday.

2.6.4 However, it is likely that some construction activities may need to be undertaken outside of these core working hours. This is partly because certain construction activities cannot be stopped, such as concrete pouring, but also to manage the construction programme. Where onsite works are to be conducted outside these core hours, they would comply with any restrictions agreed with NELC, in particular regarding control of noise and traffic in accordance with the relevant requirements which would be secured by the DCO. The need for any such works would be minimised where possible and will be carefully managed to reduce effects on local people.

### 2.7 Dealing with Non-Compliance

2.7.1 To provide compliance with the measures set out above, the contractor must enforce a disciplinary procedure, such as for example a 'yellow/red card system' or equivalent.

2.7.2 This would then work as follows, In the first event of non-compliance, a warning would be issued to the HGV driver (a 'yellow card'). In the event of any repeat of the contravention, that driver will be prohibited from making further HGV deliveries to the Site (a 'red card'). However, this is only an example and the final contractor must set out the details of a disciplinary system within the final CTMP to be prepared prior to construction starting onsite, and agreed with the local authority.

### 2.8 Wheel Cleaning Facility

2.8.1 In the interests of highway safety, wheel cleaning facilities would be installed on Site from the start of the construction phase, and all HGVs leaving the construction site would be required to wheel wash when exiting the Site. The need for this measure and the location of the wheel cleaning facilities would be periodically reviewed throughout the construction phase.

### 2.9 Advance Warning Signage

2.9.1 Advance warning signage will be erected on the public highway prior to the temporary construction compound site entrances. The erection of signage will warn drivers of the construction access ahead and the potential for slow turning vehicles. An example of the proposed signage is shown in **Plate 3**.

**Plate 3: Example of Proposed Signage**



2.9.2 The appointed contractor will be required to maintain all signage.

2.10 Contact Details

2.10.1 Twenty-four-hour contact details will be provided on the Applicant's website as well as on any site information boards so that residents can get in touch to find out further information. This will be a name and number established by the contractor once appointed. It is anticipated that the Project liaison manager will act as the initial point of contact for members of the community to find out further information.

2.11 Network Rail

2.11.1 Prior to any work adjacent to the railway the contractor will assess and identify if any additional barrier protection is required at the Queens Road Railway bridge to minimise risk of vehicle incursion onto the railway with any works being agreed with Network Rail. Any works that may then be required will be kept fully maintained to the required standard for the duration of works.



Immingham Green Energy Terminal

6.7 Outline Construction Traffic Management Plan

---

2.11.2 The contractor will consult with Network Rail prior to any proposed use of Kiln Lane Level Crossing by construction traffic and will comply with any reasonable requirements of Network Rail as to the use of Kiln Lane Level Crossing to ensure the safety, security, operation and maintenance of the operational railway.

2.11.3 The contractor shall not include South Marsh Road (between North Moss Lane and Hobson Way) and South Marsh Road Level Crossing in any construction traffic route (including in the event that Queens Road Bridge is unavailable for access) and shall specify that South Marsh Road is not suitable for use by vehicles over 7.5 tonnes.

### 3. Construction Access

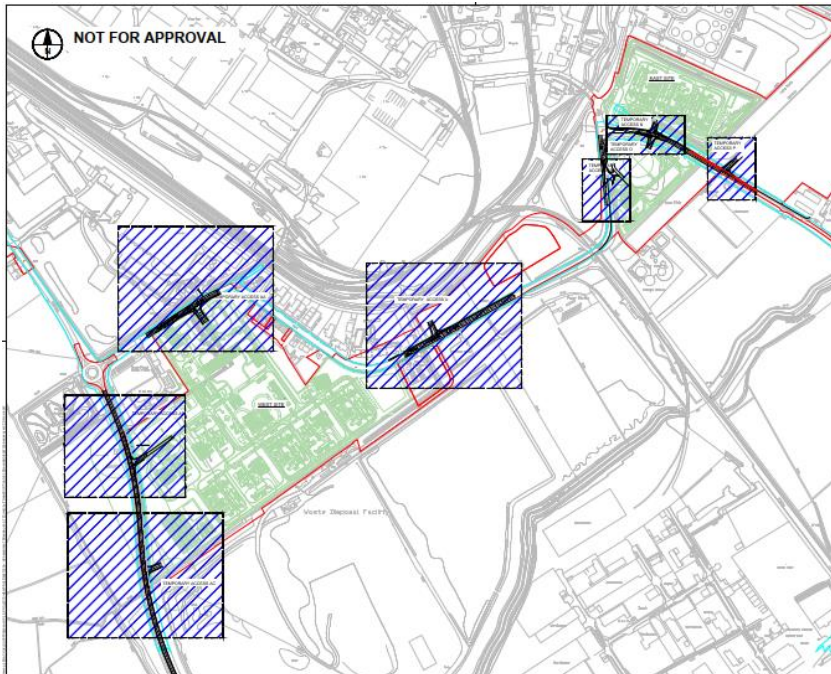
#### 3.1 Access Points

3.1.1 There are a total of eight temporary construction access points into the Site as follows:

- a. Temporary Access AA from Kings Road (**Plate 5**)
- b. Temporary Access AB from the A1173 (**Plate 6**)
- c. Temporary Access AC from the A1173 at the southern boundary of the Project (**Plate 7**)
- d. Temporary Access M from Queens Road (**Plate 8**)
- e. Temporary Access N and O a crossroads at the western end of Laporte Road (**Plate 9**)
- f. Temporary Access P at the eastern end of the Project on Laporte Road (**Plate 10**)
- g. Temporary Access U from Kings Road (**Plate 11**)

3.1.2 The access points are shown in **Plate 4**.

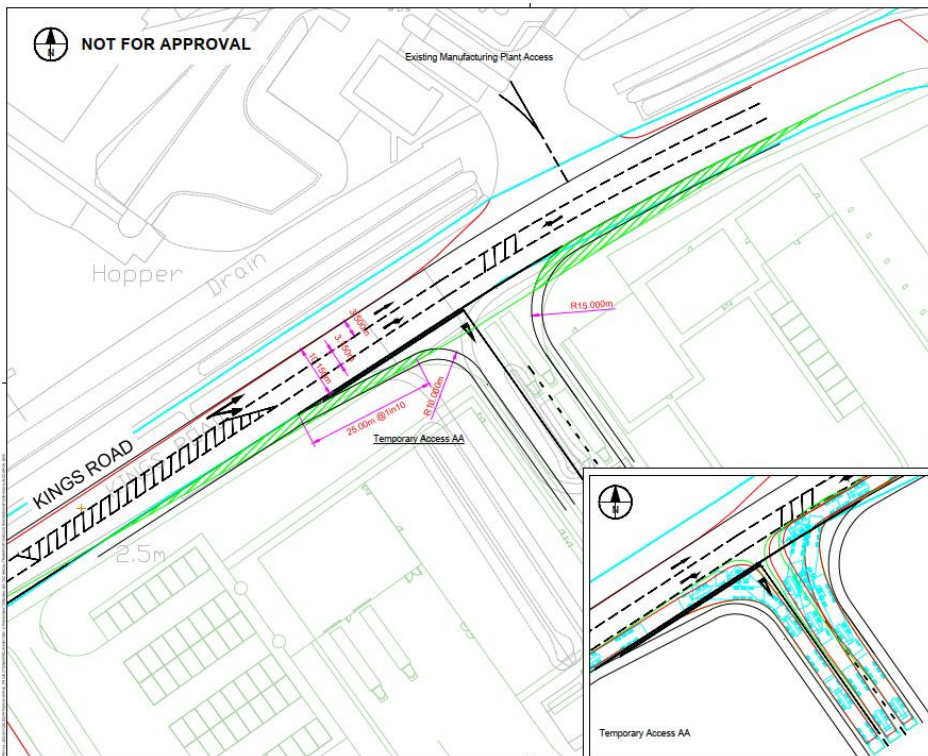
#### Plate 4: Construction Accesses





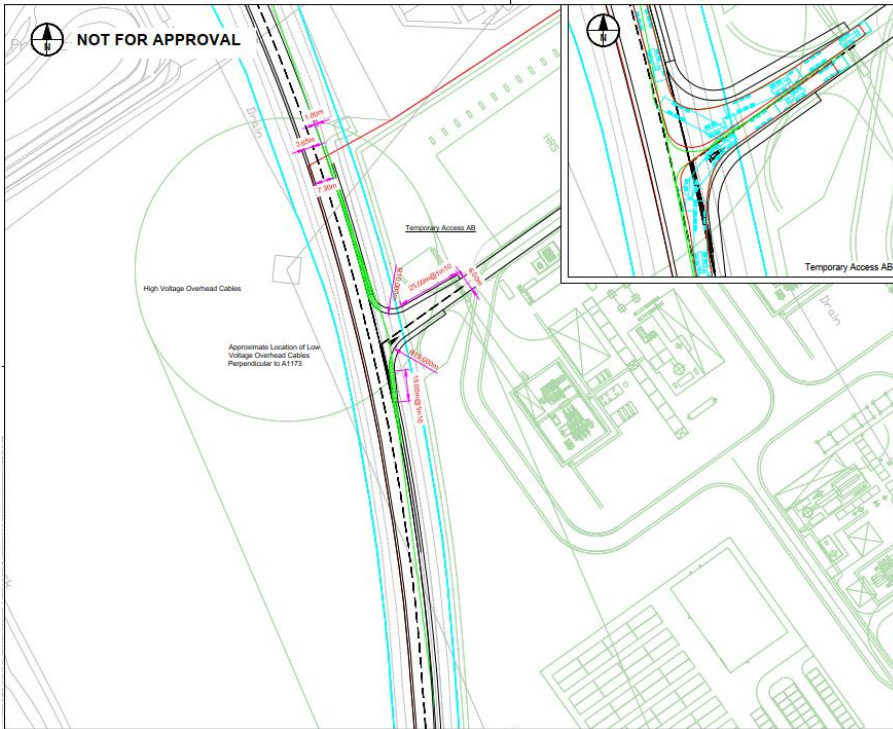
3.1.3 The temporary access drawings are shown below.

**Plate 5: Temporary Access AA**



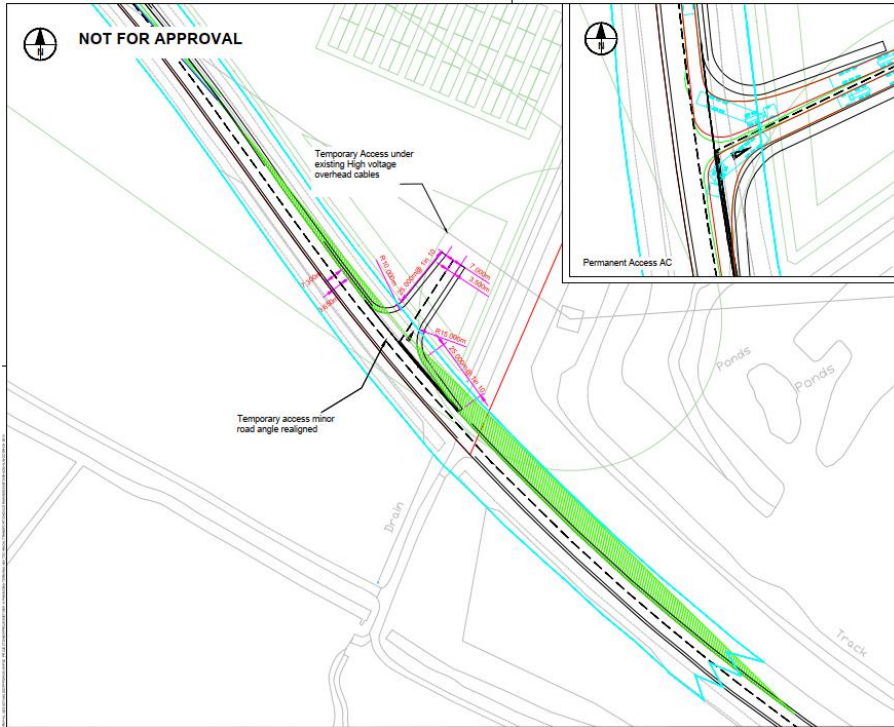
3.1.4 As can be seen in **Plate 5**, Temporary Access AA is a right turn ghost island from Kings Road and has been designed to accommodate max legal HGV movements.

**Plate 6: Temporary Access AB**



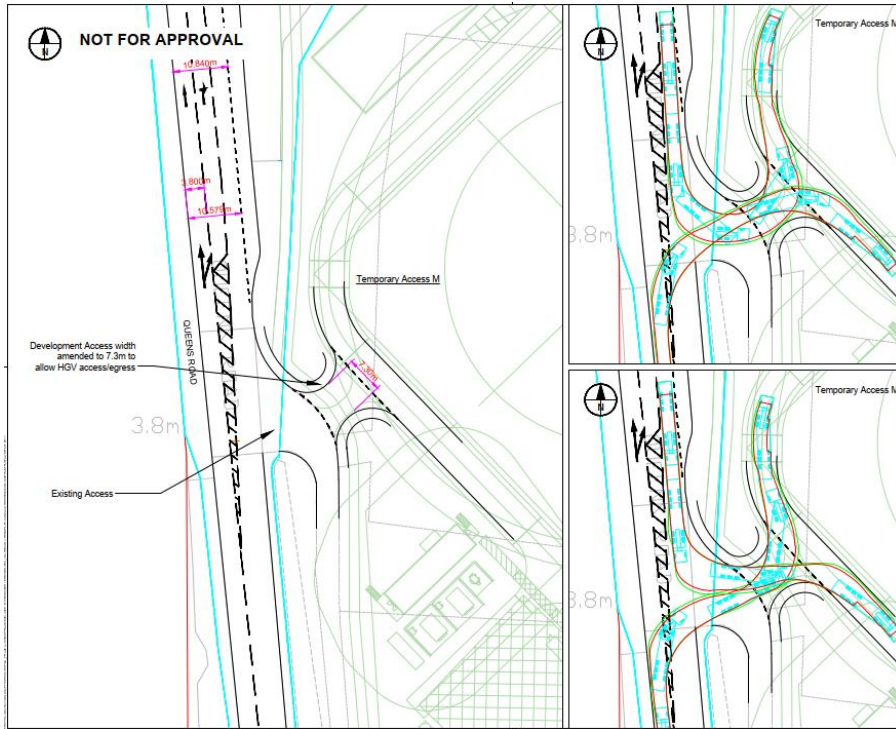
3.1.5 As can be seen in **Plate 6**, Temporary Access AB is a simple priority junction from the A1173 and has been designed to accommodate max legal HGV movements.

**Plate 7: Temporary Access AC**



3.1.6 As can be seen in **Plate 7**, Temporary Access AC is a simple priority junction from the A1173 and has been designed to accommodate max legal HGV movements.

**Plate 8: Temporary Access M**

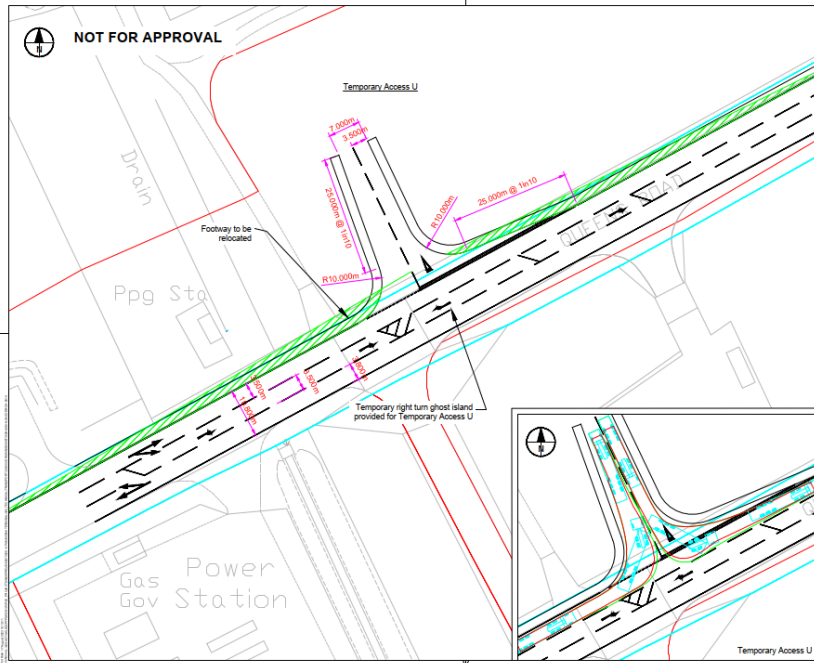


3.1.7 Temporary Access M (**Plate 8**) is a simple priority junction with Queens Road.





**Plate 11: Temporary Access U**



3.1.11 As can be seen in **Plate 11**, Temporary Access U is a right turn ghost island from Kings Road and has been designed to accommodate max legal HGV movements.

## 4. Abnormal Indivisible Loads

### 4.1 Strategy and Routing

- 4.1.1 It is proposed that the largest AILs will be received at the Port where they will be offloaded onto suitable haulage vehicles and transported into the Site using the A1173 and Kings Road. In order to facilitate this, the temporary removal of some specific items of street furniture and overhead cables in four locations (which comprise Work No.10 on the **Works Plans [TR030008/APP/4.2]**) would be required to allow the passage of these AILs along Kings Road to the Site. This would take place up to 30 times during Phase 1, and the frequency is expected to be for subsequent phases.
- 4.1.2 The contractor will liaise fully with the Police, Local Highway Authority and if required National Highways regarding any AIL movement to ensure that all required measures and approvals are in place.



## 5. Monitoring

### 5.1 General Measures

5.1.1 Monitoring will be undertaken by the appointed contractor to assess the effectiveness of the measures included in the final CTMP to control the routing and impact of construction HGVs. Monitoring will also provide a firm basis upon which to answer queries and complaints regarding the HGV traffic impact during construction. A 24-hour contact name and number will be established by the contractor and displayed at the Site.

### 5.2 HGV Monitoring Surveys

5.2.1 The appointed contractor will maintain gatehouse records of construction HGVs entering and leaving the Site and they will be available to NELC on request.

5.2.2 Should any complaints be raised by members of the public with regards to construction HGVs not using the dedicated HGV route to the Site, gatehouse records will be used to identify the offending HGV involved and appropriate sanctions put in place to ensure no repeat events, as set out above in **Section 2.7**.

## 6. Consultation

### 6.1 Planned Liaison

- 6.1.1 A formal process of liaison between all relevant parties (contractors, NELC and National Highways) via a Local Liaison Committee, would:
- Establish a channel of communication between the contractor and the regulating authorities.
  - Make all parties aware of the results of monitoring of the final CTMP.
  - Provide an additional route by which any complaints can be communicated and dealt with.
  - Provide a route through which transport related issues can be identified and dealt with.
  - Provide prior notice of significant events, e.g. delivery of abnormal loads, in accordance with standard protocols.
- 6.1.2 In order to keep the CTMP 'live', it is proposed that a short-written report is prepared by the contractors on a six-monthly (or frequency as agreed between the contractor and local authority once construction commences) basis and circulated to all key stakeholders. Any comments generated by the report will be circulated to all key stakeholders and a meeting may be held if required.
- 6.1.3 Following the report and any meeting, the CTMP could then be reviewed and updated if required to reflect current operating conditions and measures.
- 6.1.4 Some other parties may need to be consulted from time to time ~~(e.g. Royal Mail)~~. Where required (depending on the works and location) a copy of the CTMP approved pursuant to this OCTMP, along with information on working hours and proposals for traffic management or works on the highways network (including any road closures, diversions or alternative access arrangements) that have potential to affect these parties will be provided at least one month before the relevant works are anticipated to commence.



## 6.2 Royal Mail

6.2.1 A process of liaison with Royal Mail would be established prior to construction commencing on site and would remain in place throughout the construction period, or as long as is required in agreement with both parties. Royal Mail to provide a single point of contact for this process.

6.2.2 Royal Mail will be kept informed of any relevant construction activities including road closures, diversions and works to the highway, with at least one month's notice being given of any such activity that has the potential to impact its operations.



## 7. References

Ref 1-1 HM Government (2008). Planning Act 2008 (c.29).

## 8. Abbreviations and Glossary of Terms

**Table 10: Glossary and Abbreviations**

Term	Acronym	Meaning
Abnormal Indivisible Load	AIL	Abnormal Indivisible loads are loads which cannot, without undue expense or risk or damage, be divided into two or more loads for the purpose of carriage on the road.
Associated British Ports	ABP	One of the UK's leading and best-connected ports groups, owning and operating 21 ports across England, Wales and Scotland.
Construction Traffic Management Plan	CTMP	A plan which identifies clear controls on routes, vehicle types, vehicle frequency, vehicle quality and hours of site operation.
Construction Worker Travel Plan	CWTP	A plan to control the trips made by the construction workers (including encouraging car sharing) and thus reduce the impact of the workforce upon the highway network.
Development Consent Order	DCO	The consent for a Nationally Significant Infrastructure Project required under the Planning Act 2008.
Heavy Goods Vehicle	HGV	A large truck for transporting goods.
North East Lincolnshire Council	NELC	The site falls within the administrative boundary of the North East Lincolnshire Council.
Nationally Significant Infrastructure Project	NSIP	large scale developments (relating to energy, transport, water, or waste) which require a type of consent known as "development consent"
Outline Construction Traffic Management Plan	OCTMP	An outline plan which identifies clear controls on routes, vehicle types, vehicle frequency, vehicle quality and hours of site operation and which the CTMP will be based upon.
Outline Construction Worker Travel Plan	OCWTP	An outline plan to control the trips made by the construction workers (including encouraging car sharing) and thus reduce the impact of the workforce upon the highway network and which the CWTP will be based upon.



## Appendix A: Construction Worker Travel Plan